



The Artists' Corner



Vol. 53 Issue 4

500 Main Street
Springfield, Oregon 97477

April 2011

For Your Information

- ◆ Submissions to the newsletters? Please contact Tammy Magee; newsletter@emeraldartcenter.net. Submissions for articles, each month, are due the last Monday of the previous month before the next newsletter.

Spring Cleaning Art Sale



Artists might like to know that the Ben Franklin Frame Shop offers wall space for an "Artist Spotlight". It's a monthly exhibit for a single artist and it comes with discount benefits. Application at the Harlow Rd. frame shop counter.

Remembering Vern Roos

Vern Roos, Dolores' husband passed away after years of suffering from MS. The past few years Dolores has cared for his needs every day. She and Vern gave hundreds of dollars in cash donations over the years. She was on the board for several years chairing hospitality. A paint brush or hammer were so often found in her hands as we saw her at work at the 421 gallery. Her contributions were great in the vision we all had for a better home—Emerald Art Center. Members such as Dolores are why we enjoy our Emerald Art Center.

Izzy Fletcher

The very cool idea was listed on our "ideas board" by several members to hold a *spring cleaning art supplies sale* as a fundraiser.

This idea is *really fabulous* because it helps **you** clean up your storage area, it helps **other artists** get affordable art supplies they need, it **reuses** perfectly good art supplies, and it helps us **raise money** for the art center. **YEAH!!!**

If you have any art supplies, tools, paints, brushes, mats, frames, canvases, paper, shelving, easels, equipment ... *whatever* ... stashed away in your attic or basement that you will not likely need or use... please donate them to our spring cleaning art sale.

- Bring your items in to the Emerald Art Center and place them along the west wall in the Dottie Chase Classroom.
- List your name and the items you've donated on the donation sheet on Sue's door.
- Last date for donations is Saturday April 16 at 4 PM
- Come browse for cool supplies **you** need Tuesday, April 19 at 6 PM at the Member Meeting.

We have already collected some cool art supplies!

- Tons of blank canvases
- Stained glass supplies
- Paint and brush carrying box
- Table top easel
- Nice art (with cool frames)
- Print and poster holders
- Stamps... tons of stamps, cute, fun, decorative stamps with tons of cool paper and inks

...Bring it on!

What's New at EAC	1
Our Mission	2
Gallery Exhibits.....	3
Members' Page	4
Emerald Spring Exhibition ..	5 & 6
Workshops	7
Family Art.....	8
Art Classes	9
Above and Beyond	10
Calendar.....	insert



Emerald Empire Art Association is a nonprofit organization dedicated to developing and encouraging visual arts in the community.

Vision: A community embracing and celebrating the arts, experiencing the joys of creative expression, and sharing artistic creations with one another.

Mission: To develop and encourage greater interest in the arts.

Goals:

- To provide an environment which supports and develops artists.
- To provide opportunities for artists of all ages to display and market their work.
- To offer a variety of programs and events to teach and display art.
- To enrich the community through outreach and in-house art programs.
- To thrive as an organization with committed volunteers, sustainable funding sources, and sound business practices.
- To provide leadership in collaborative efforts to support organizations located in the Springfield Downtown Cultural District as well as area arts organizations.

General Membership meetings occur the third Tuesday of each month at 7-9pm. Visitors are always welcome.

Executive Director:

Cheryl Leontina

director@emeraldartcenter.net

Gallery Coordinator:

Sue Banta

coordinator@emeraldartcenter.net

Newsletter Editor

Tammy Magee

newsletter@emeraldartcenter.net

Phone: 726-8595

admin@emeraldartcenter.net

Website: www.emeraldartcenter.org

Officers:

President - Daryl Annette Swan

1st Vice President - Guy Weese

2nd Vice President - Bonnie Sandland

Secretary - Vacant

Treasurer - Janet Biles

Immediate Past Pres. - Joe Leahy

AT YOUR SERVICE

EUGENE/SPRINGFIELD™

- Errands
- Petsitting
- Homewatching
- And More!



Jan Vanderspek and Associates 541-543-4423
 AtYourServiceEugene@gmail.com BONDED / INSURED

WE MAKE YOUR LIFE EASIER!

ERRANDS We will accompany you or run the errand for you.

PETS We offer dog walking and other pet sitting services.

HOME We are here to watch your home while you're gone, including maintenance and garden care.

OTHER SERVICES Help in packing, moving and settling, interior decorating, furniture moving, painting, repairs, trash hauling. Whenever you require a helping hand, give us a call.

*We especially cater to senior citizens!
 We pride ourselves in being dependable,
 trustworthy and professional.*



JAN VANDERSPEK
 Over 50 years of
 customer relation
 experience

Writing for business, the arts and social services



Todd Peterson

Call Todd at 741-2067
for your next writing project.




www.oregonwriterandeditor.com



Art Reproduction

Janet Smith (541) 746-1100
Toll Free # 1-800-746-1102

Certified Organic Coffee



**Founded in 1984 by
Alberto Miranda**

The *Cafeto Custom Roasting Coffee*
is now the most respected and
established coffee roasting company
in Lane County.

4000 E 22nd Ave.
Eugene, OR 97403
541-484-1005
(Exit 191 on I-5)

Gallery Exhibits



The Emerald Art Center presents

“Photographs by Geir and Kate Jordahl”

The exhibit is shown from March 29 through April 29, 2011.

Gallery hours are Tuesday through Saturday from 11-4pm.

A reception for the public and the artists will be on **SECOND FRIDAY, April 8th** from 5:00-7:00.



Canyonlands, Utah by Geir Jordahl

John & Robin Jaqua Gallery

Geir Jordahl is showing photographs from his book **“Searching for True North.”** Geir Jordahl is an artist, teacher and dedicated traveler. Both his personal and commercial photography is a reflection of his passion for light and life. As a teacher he emphasizes the importance of dedication to craft while fully exploring creative potentials.

In his photography, Geir Jordahl explores his relationship to space and experience by interacting with its periphery through the use of panoramic vision. His engaging compositions speak both to the specifics of place and to the imagination. The journey is an integral part of Geir’s work both figuratively and literally. Geir is Norwegian born and **feels that the foundation of travel is an essential aspect of his vision. “Searching for True North” is a selection of images from 30 years of Geir Jordahl’s photographic work. On this lifelong journey, he follows his internal compass to discover the universal landscape, those places that, while separated by cultural or political borders, are united in their celebration of the Earth and its interaction with human-made elements. Although Jordahl is inspired by place, the work is not place specific. As Margaretta K. Mitchell says in the book’s introduction, “Nature has given Jordahl a way to comment on our contemporary lives...The iconography of earth, air, and water come together in Jordahl’s photographs with the artifacts of civilization, allowing the mysteries of these places to haunt us, making poetry of the visible.” He is director of PhotoCentral, a non-profit photographic educational facility in Hayward, California.**



Nullarbor View, Western Australia by Kate Jordahl

Kate Jordahl is showing photographs from **“Cloudscapes.”**

Her artwork has been concerned with spaces we humans classify as sacred for many years and has evolved to include the questions of personal spaces as well as public spaces. Sacred for her includes natural spaces, religious spaces and places where personal experience leaves a spiritual mark.

The images here are from places where there is a sense of magic and wildness such as Norway, Australia, New Zealand and the Western United States. Being open to the spirit of place in all of these locations is part of what she finds intriguing in travel and in photography. She plans **her journey for “destinations” like national parks and World Heritage sites and then celebrates as the places between are also full of visual wonder, recognizing and capturing the spirit and power of place in her photographs.**

In her travels and photography, Kate searches for the places where the spirit of the earth and the human spirit come together. Using both film and digital capture, she stretches her images to beyond the expected representation to a magical and reverent imaging of the land. In addition to many group exhibitions, she has had featured exhibitions at Vision Gallery, San Francisco, Yamate Gallery, Yokohama, Japan, the Olive Hyde Gallery, Fremont and the San Francisco Museum of Modern Art Artist’s Gallery, San Francisco. Kate Jordahl is a professor of Photography and Digital Imaging at Foothill College, Los Altos Hills, California. Kate Jordahl’s photographs are in numerous collections including the Bibliothèque Nationale de France, Paris, Santa Barbara Museum of Art, Santa Barbara, California, University of Texas at Dallas, Texas and the Yosemite Museum, Yosemite. Her work is currently represented by Modernbook Gallery in San Francisco. She has lead photography groups in trips to Italy, France and Japan as well as around the United States. Teaching inspires her and sharing her love of photography is a great joy to Kate. Making her photographs then sharing that process and helping others make their own photographs completes the circle of creativity for Kate.

Cyd & Casey Woodard Gallery

Also showing, featured members:

“Scenes From Near and Far” by Marge Tull and Sandy Mart plus “Light in Glass” by Daryle Ryder.



“The Wallows” by Marge Tull

A collection of impressionistic watercolors including landscapes, florals and city scenes. Marge Tull and Sandy Mart have taken workshops and classes together for many years. Marge’s paintings reflect her loose, “leave something to the imagination” style and Sandy is showing her “Impressions of England”. “Light in Glass” by Daryle Ryder has worked with fused glass for 14 years and worked with a variety of artists and different types of glass styles. In recent work she has been working with cast glass and different types of slumping techniques with thicker glass. This has led to a new styles and variety in the end result, which include sculptures, bowls and plates. Color and depth are big players in her latest work.



“The Lake District” by Sandy Mart

Brockett Family Gallery

The Emerald Youth Art Exhibit is on display and includes art from Springfield High School, Agnes Stewart Middle School, Springfield Middle School, Moffitt, Brattain, and Guy Lee Elementary Schools.

Members' Page

Member Meeting

April 19 6:30 PM:

- ◆ Local Guest Artist **Light Sculptures** by **Stephan White**
- ◆ **Spring Cleaning "Artist Supplies Garage Sale" Fundraising Benefit** *If you have art supplies stored in your attic or basement and no longer use these items, please consider donating them to the EAC "Artist Supplies Garage Sale" Fundraising*

Stephan White works at the Studio of Luminescence where he creates handcrafted light sculptures of laminated paper and wood with the goal of bringing beauty and light to interior environments. The surface appearance of a luminescence light sculpture is parchment-like in color and texture. Luminescence Light Sculptures can be seen at Oregon Arts Alliance down town Eugene at Willamette and Broadway Stephen White/ LUMINESSENCE 3400 View Ln., Eugene, OR 97405 541-344-2124



Florence Artist Bernie Herr has two paintings selected for display in the juried art show, *Lighthouses 2.0*

The show will be on display from March 26 to April 23 at the Whistling Gallery, 87456 Whistling Dr. Suit A, Bandon Oregon.

Both paintings, "Rock Pile Light" & "Surveillance Light" are renditions in water-media. The juror is well respected artist, Michael William Ousley.



Sterling Editions, an artists' service company established in 2004, provides expert art reproduction Giclée printing. Starting with high quality, high resolution scans that are processed for sizing, color accuracy, and prepared for the appropriate archival paper or canvas print media, these museum quality reproduction prints are a compliment to the artists' efforts and a keepsake for buyers. Additional art services include image capture and preparation for competition, contest and art show submissions or for website content. Poster and banner printing that compliments shows and events for artist identity can be produced on elegant fabric stock, vinyl or made to be mounted and laminated for a framed presentation. Sterling Editions offers many artist resources that can help develop marketing opportunities and provides knowledge derived from years of experience.

Find them at Sterling-Editions.com or 541-746-1100.

Woodard Gallery Members' Shows – 2011 Schedule

- Apr. 30 – PICKUP ONLY (no intake because of Juried Show) [end of Mar/Apr show and start of Juried Show]
- May 28 – INTAKE ONLY (no pickup because of Juried Show) [end of Juried Show and start of Jun/Jul show]
- Jul. 30 – PICKUP AND INTAKE [end of Jun/Jul show and start of Aug/Sep show]
- Sep. 24 – PICKUP ONLY (because of MAS) [end of Aug/Sep show and start of MAS]
- Oct. 29 – INTAKE ONLY (because of MAS) [end of MAS and start of Nov/Dec show]
- Jan. 7 – PICKUP AND INTAKE [end of Nov/Dec show and start of Jan/Feb show]

Congratulations

Three of Paul Bourgault's "plein air" paintings have been accepted in the "Oregon Wine Country" exhibit at the David Joyce Gallery on the main campus of LCC.

From Our Exhibit Directors

Thank you all for your patience at the last intake when we were brand new at the new procedure! All things considered, it went pretty smoothly, not in small part to Carol Plaia for getting a bunch of the carbon sets ready for us.

It's reminder time again, especially since we have quite a few new members. If your piece is to be hung, please have a wire on the back, with a 3-inch drop. It is extremely difficult to try to hang something with a sawtooth or a ring. Thanks for helping make it easier to hang the shows!

Don & Ginny Burgess Exhibit Directors



	East Wall	South Wall		East Wall	South Wall	
2011				2011, Continued		
April	Daryl Ryder	Sandy Mart		August	Jerry Williams	Jerry Williams
May	- National Jury Show -	-		September	open	open
June	Patsy Hand	Dana Whitney		October	-Mayors Art Show-	
July	Anita Vuksch	Elva Carter		November	John Chandler	Barbara Aten
			December	Shirley Reade	Shirley Reade	



Emerald Spring Exhibition 2011



"The Guardian II" by A. Marquez

THANK YOU

Award Sponsors:

Casey and Cyd Woodard	Joy Woodard Award of Excellence
Wildish Sand & Gravel, and the Butler Family	Gold Medal Award
Sterling Editions and US Bank	Silver Medal Award
Dari-Mart, Pat Straube, <i>in Honor of Gladys Gibson</i>	Bronze Medal Award
Leahy, Van Vactor & Cox	Don Lutes Award of Distinction
Springfield Chamber of Commerce, Dan Egan	People's Choice Award
Pacific Source Health Plans, Ken Provencher	Merit Award
Bill Morrisette	Merit Award
Rust Family and Dottie Chase	Merit Award
Evergreen Land Title Co., Nancy Jones	Recognition Award
Izzy Fletcher <i>in Memory of Kenneth Fletcher</i>	2 Recognition Awards
Ms Kelli and Gene Tinker	2 Recognition Awards
Springfield Utility Board, Meredith Clark	Reception

Committee:

Gladys Bacon-Rust
Merrilea Jones
Fran Pecor
Rosemarie Atencio
Isabel Dutroncy

Helpers:

Janet Smith: Catalog
Trish Leahy-Graff: Logo Design
Marilyn Stauber: Reception
Lee Harrison: Data entry
Sue Banta: everything

Emerald Spring
Exhibition 2011



"The Guardian II" by A. Marquez

MAY 2011

*You are cordially invited
to be our guest at the
Artist Reception
Awards Ceremony
Sponsor Recognition Evening*

Saturday, May 7, 2011 at 5:30 pm

*Join us
for elegant hors d'oeuvres,
confections, and a toast to the artists
and arts advocates in our community.
Be among the first to view this national exhibit!*
Emerald Art Center

This year's esteemed Juror
Judy Morris
has graciously agreed to a
"Walk Through--Talk Through"
Friday, May 6 at 6:30 PM.
Judy will discuss the strengths and merits
of the paintings selected for the Exhibition.
A \$5 donation is suggested.

Workshops

Part-time Program Provides Workshop Options for Members

We would like to remind everyone that we offer part-time participation for workshops that are not yet filled. You may register for as few as one day but are required to attend the first day. Then you may add on and pay day by day. This program affords members the opportunity to get to know an instructor and the direction of the workshop without the time and financial commitment. Also, many working members are able to benefit from a couple of days of instruction rather than miss the entire workshop. This is working beautifully to help fill workshops while allowing members to participate part-time!

Emerald Art Center to Host WSO Workshop April 4-8

If you happen to stop by the art center early in April, you may see noted artist Betsy Dillard Stroud leading a workshop designed for Aqua Media. We are pleased to be able to host this annual event at the Emerald Art Center. As always, participants will appreciate your courteous use of the side door and quiet voices during your visit. We have received so many wonderful comments about how helpful our members and staff is and how user friendly our facilities are.

Anyone interested in attending the workshop, contact the Watercolor Society of Oregon to register.



“Thinking Outside the Box”

Bev Jozwiak & Vickie Nelson

5-Day Workshop – All Skill Levels

April 11-15, 9 a.m.-4 p.m. \$455 / \$410

WATERCOLOR — Bev Jozwiak, NWS, is an award-winning and nationally well-known watercolor artist. Her work has been featured in several books and magazines, including several versions of *Splash*. Vickie Nelson has also been featured in *Splash*. She also paints for several card companies and teaches watercolor at Clark College in Washington.

Bev and Vickie have designed this workshop to help students at every skill level. Learn to paint boldly with good composition, strong values and vivid color — including luscious greens, glowing whites and rich black. All your questions will be answered, to help you achieve the end result you want. **PAINT YOUR PASSION!** Get individual attention when needed with this two-artist team. Both artists will demo daily. Think outside the box — paint outside the lines — and have fun! *Now accepting part time students!*

“Self Portrait for Fun”

Jerry Dame

3-Day Workshop - All Skill Levels

Apr 27-29, 9 a.m.-4 p.m. \$230 / \$200

OIL — “Portrait painting,” Jerry says, “has a tradition that many artists often overlook, and that is the ‘self-portrait.’ While it is most gratifying to paint the portrait of an attractive individual, it can be just the opposite to put in the effort on my own portrait.”

With great courage and a sense of humor we will forge on into the world of the self-portrait. We will look at what makes a painting look like the person. Also, how to note the differences in eyes, noses, mouths and even ears that identify the individual. We will be working from photos. Jerry will get with each artist to take their reference photograph before the beginning of the workshop. Our photos will be 8x10 inches, so they should be easy to work from. This workshop is planned to be a time of fun. Though we will be looking at a difficult subject in oils — portraits — plan on enjoying every minute behind the easel.

“Dynamic Pastel Painting”

Dawn Emerson

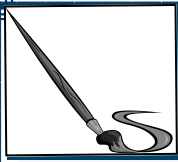
3-Day Workshop – All Skill Levels

June 6-8, 2011, 9 a.m.-4 p.m.

\$280 / \$240

PASTEL — Dawn is a dedicated teacher with over 20 years of experience teaching drawing and painting to all ages and skill levels, from kindergarten through elder-hostel. She creates an engaging class culture where sharing information and learning with joy are paramount.

The focus of this workshop will be on dynamic use of pastels. Subjects will include figures, landscapes, animals and combinations thereof. She will give daily demonstrations and tailor the workshop sessions to address the desires and needs of the group with ample individual attention.



Family Art Enrichment



Family Art Sunday TIBET

On March 13th, Family Art Sunday enlightened the communities of Springfield and Eugene with the peaceful and magical country of Tibet. Our projects included Water Lilies, Lanterns, Llaso Apso dogs, the Mandala, Tibetan opera masks, Mountains, Dragons, Prayer Wheels and Prayer Flags. The weather was frightful but we had 120 people come to share our day. The absolute highlight was our entertainment portion with professional entertainment from the Northwest Tibetan Association, of Portland. This was our last Family Art Sunday until October and what a truly wonderful way to end our season. Thank you to ALL our wonderful volunteers who, so unselfishly, come out, on a Sunday, to enrich the young lives of our community. It has been a great five months and I am looking forward to October and W. Africa.

Thank You volunteers: Ann Marie Arsenault, Sue Banta, Sue Bitterling, Shirley Canning, Elva Carter, Maile Carter, Clinton Conley, Charlene Eckman, Merit Ferrell, Robert Fredrick, Ellen Furstner, Ellen Gabehart, Jan Griesel, Dave Jacobson, Kim Jarvis, Merrilea Jones, Sally La-Marche, Chris Mackay, Tali Mckay, Carol Plaia, Chanda Robinson, Donna Shimmels, Jay Stahly, Daryl Annette Swan, and Marilyn Stauber

Annetta

Drop-In

3rd Saturday

Saturday Art Class

10:00 am - 12pm

April 16

GREETING CARDS

For Mother's & Father's Day

Free



Thank you, **Merle**,
for your help on 
March 19th
With the Saturday class

Emerald Art Center is proud to present...

Teen and Adult Classes

EVERY FRIDAY

OPEN ART STUDIO

11:00 AM—4:00 PM FREE

DROP IN CLINICS

with Bruce Mitchell WEDNESDAYS

PAINTING FOCUS - 1:00 - 3:30 PM

DRAWING FOCUS - 3:30 - 6:00 PM



OPEN DRAWING with Linda Kaye WEDNESDAY EVENINGS 6:30 to 9:00 PM

The class fee of approximately \$3 to \$4 which pays for the live model. This is open drawing (or painting), not a drawing class. However, there are many experienced artists willing to help a beginner and our library is full of books. Several professional models rotate weekly. Both clothed and nude models are used, depending on what the artists and models want.

MONTHLY CARD MAKING CLASS with Merrilea Jones

SATURDAY April 9 1:00 to 3:00 PM

Members \$ 11.50 Non-Members \$ 13.00 Plus a \$ 3.00 Materials Fee

Learn how to make 3 beautiful cards you can be proud to say you made yourself. Merrilea will teach stamping, embossing, paper tearing, chalking, punches, dye cuts and many more techniques in her interactive, paper craft-ing class. Will offer birthday, sympathy and Valentine cards.



PAINTING IN PLANES OF COLOR with "Prince" Ernest Principato

WEDNESDAYS APRIL 6—27 9:00 am to 12:00 PM

Members \$ 120 Non-Members \$ 140 OR \$30/session members \$33/session non

This oil pastel class will focus on principles of color and sculptural construction and design. Exploring color **will be the emphasis, discussing principles of plein air color and how to express light and form.....also the dynamics of composition and design will be covered and much more.** Oil or water-soluble oil paints or pastels are optional.



TAKING YOUR WATERCOLORS TO THE NEXT LEVEL with Marilyn Stauber

Saturday afternoons June 4 to the 25th—July 9 & 16 from 1 — 3:30 PM

Members \$90 Non-Members \$97.50 Solutions to painting problems are available with many different painting techniques as well as by adding opaque mediums such as semi hard pastels, brilliant oil pastels, and acrylics. These paints blend beautifully over watercolors to enhance or cover areas in a fresh new way.

Registration & Cancellation Policy

Payment is required with Registration. We accept Checks, Cash, and Credit Cards as shown below. There will be a non-refundable cancellation charge of 10% of the total class fee if cancellation is made more than 7 days before the first day of classes. No refunds will be made 7 days before the class begins.

I have read, and I understand EAC's cancellation policy _____ (your initials)

Enclosed is my registration and payment of \$ _____

Payable to EAC for the class: _____ date _____

Name: _____

Address/city/state/zip: _____

Phone (____) _____ Email: _____

Payment method: Cash, Check, VISA, MasterCard

Card #: ____/____/____/____/____/____/____/____/____/____/____/____/____/____/____/____ Exp: ____/____

Signature: _____



~Help Wanted~
 Emerald Spring Exhibition National Juried Show
 Committee Position

A Volunteer is needed to help with the processing of the entry forms for the Emerald Spring Exhibition National Juried Show. The bulk of work for this committee position begins in February and goes through March 2012 (most entries are added in March). Information is added to an Access database and maintained in a master folder on a MAC. The final process is to save images to a master file and two cds for the judge and the committee chairperson.

Processing includes: writing receipts when entries come in, checking the forms for accuracy and completion; filing the entry forms, cds, and the SASEs that will be returned with the letters of acceptance or rejection; processing the cds into the folder and preparing a cd for the committee to view before sending to the judge.

Thank you **Daryle Ryder, Prince, Yvonne, and Celeste!!!**
 And thank you **Guy Weese** for the great Photos!



Artist Demo & Lecture Painting Workshop: **Ernest Principato "Prince"**



Member Artist Demo:
Glass Fusing by Daryle Ryder



Story Tellers: **Yvonne Young and Celeste Rose**



The Artists' Corner

Vol. 53 Issue 4

Above and Beyond:

- ⇒ Annetta Becker - Annetta took over Family Art Sunday in 2009. She embraces it, gives her time, her energy and soul to this project. If Annetta had not taken over after Charlene left, it would have died. Each month gets better and better. Annetta told me, **"I did not realize how much time it took and that working together with women of my age, planning as a team is what I like. I have never, in my life, done something that is so rewarding."**
- ⇒ Carol Plaia - Carol took charge of the Chamber Amici set up, judging and the reception. She is also our Special Projects person, helping out and diving into things that have been finished and dropped over the years. Thanks Carol for caring and doing all that you do!
- ⇒ John Siwinski - On a rainy Sunday, you have a building full of people for Family Art Sunday, and you notice rain leaking in. After you cover the window sills with towels and vases, it is coming from above the door. Who can you call on a Sunday? John, who rushes over and fixes the problem. Then on Tuesday he is called to fix **the renter's windows. John, what would we do without your help?** Thanks so much!

Tired of Guiding?

Instead of guiding you could:

- Help with the newsletter
- Clean
- Make calls

Coffee - we no longer have free coffee. We will not be serving coffee every day. If you are hosting the second Friday and want coffee served, you will need to bring coffee, filters, cups, sugar and cream.

Wish List
Big Wishes:

- **Book case (60" across)**
- Copy Machine—please!
- ABC—notebook dividers
- Nice desk that has drawers for library
- Business card stock
- Scotch tape
- Small paper clips
- Nice card stock for Teach Arts
- Name tag holders
- Business card stock 8871

Little Wishes:

staplers, plastic cups for punch file folders, and white out.

And things we always need ... **card**-stock paper, copy paper (8 1/2x11 & 11x17), envelopes, small paper plates, and paper coffee cups, plastic bags for cookies.

Help Wanted:

Contact Cheryl Leontina or Sue Banta 726-8595 with your interest in any of the positions listed below.

- COMPUTER HE LP
- Volunteer Committee Position: Member with graphic design skills with an interest and willingness to put together Flyers and Brochures for:
- TEACH Arts Program
- Adult and Satellite classes
- National Spring Juried Exhibition

Thank You Members:

Please put your name on what you donate and if possible what it is. I will find several bags with some items out of the bags and I have no idea who gave what.

- Bob Baysinger for money donation.
- Bruce Mitchell for money donation.
- Lorraine Austin for paper, hair dryer, easel, books, and case with markers
- Annetta Becker for cookies and deviled eggs
- Maile Carter for flowers
- Merle Gundloch for towels
- Carol Lane for library books
- Fran Pecor for Teach Arts paper
- Carol Plaia for scotch tape and name badges