



The Artists' Corner



500 Main Street
Springfield, Oregon 97477



September 2009



For Your Information

Photographer & book binder **John Watson** will be exhibiting selected pieces at the Springfield City Hall Gallery through September. John has generously offered to donate 30% of all sales to the Library and 20% of all sales to the TEACH Arts youth arts program at EAC.

*WOW! You're the awesomest John!!!
Thank YOU!!!*

Artist Member Carol Plaia is *In the News* as "maskwoman" online at National Geographic's **Genographic** Migration Stories. See Carol's fascinating story at: http://migration-stories.nationalgeographic.com/your_stories/

What's New at EAC.....	1
Shows on View.....	2
Gallery Exhibits.....	3
Members' Page.....	4
Workshops.....	5
Adult Classes.....	6
TEACH Arts.....	7
Thank YOUs!.....	8
Chamber Music Amici ... insert	
Calendar.....	insert



Emerald Art Fall Follies

2009

Variety Talent Show At the

Richard E. Wildish Community Theater
630 Main St. Springfield, OR

Plan to join us for the **1st EVER** Annual
Emerald Art Follies

A Fun Variety Show

with Talented Performers from:

Academy of Arts and Academics A3, Chamber Music Amici, City of Springfield Mayor's Office, Springfield Arts Commission, Springfield Chamber of Commerce, Springfield City Officials, Springfield Library, Springfield Museum, Springfield Utility Board, Emerald Art Center

Guest Performance by the Mystery Train!

Tuesday Evening

September 15, 2009

The show will begin at 6:00 pm

(Seating is limited. Plan to arrive early.)

Cake and Punch will be served at the

"After Performance Party"

From 7:30 till 9 PM at

Emerald Art Center

500 Main Street Springfield OR 541-726-8595

A Wonderful Evening of Fun, Family Entertainment

FREE FREE FREE FREE

Mark your Calendars with this date!!

**Special
Thank YOU to**
Thomas Draggoo
of Siuslaw Bank
for agreeing to
MC our
event!

Wow!!!... the
whole city
of Springfield is
getting in the
act!!!

Don't miss
this **BIG**
Event!

PH: 541.726.8595 FX: 541.726.2954 admin@emeraldartcenter.net www.emeraldartcenter.org

Classes, Workshops, Gallery & Gift Shop Tues—Sat 11 am— 4 pm



Emerald Empire Art Association is a nonprofit organization dedicated to developing and encouraging visual arts in the community.

Vision: A community embracing and celebrating the arts, experiencing the joys of creative expression, and sharing artistic creations with one another.

Mission: To develop and encourage greater interest in the arts.

Goals:

- To provide an environment which supports and develops artists.
- To provide opportunities for artists of all ages to display and market their work.
- To offer a variety of programs and events to teach and display art.
- To enrich the community through outreach and in-house art programs.
- To thrive as an organization with committed volunteers, sustainable funding sources, and sound business practices.
- To provide leadership in collaborative efforts to support organizations located in the Springfield Downtown Cultural District as well as area arts organizations.

General Membership meetings occur the third Tuesday of each month at 6 pm. Visitors are always welcome.

Executive Director:

Cheryl Leontina

director@emeraldartcenter.net

Gallery Coordinator:

Sue Banta

coordinator@emeraldartcenter.net

Newsletter Editor

Tammy Magee

newsletter@emeraldartcenter.net

Phone: 726-8595

admin@emeraldartcenter.net

Website: www.emeraldartcenter.org

Officers:

President - Joe Leahy

1st Vice President - Guy Weese

2nd Vice President - John Siwinski

Secretary - Rina Francisco

Treasurer - Shirley Reade

Immediate Past Pres. - Steve Hill

◆ **Want your Newsletter by email?**

Send an email to

admin@emeraldartcenter.net saying

"Please send me mailings via email" and you will begin receiving those soon.

◆ **Submissions to the newsletters?** Contact

Tammy at: newsletter@emeraldartcenter.net.

Submissions for articles, each month, are due the last Monday of the previous month before the next newsletter.

SHOWS ON VIEW

To schedule an exhibition: Contact Isabel L. Dutroncy at 513-4123

<u>Venue</u>	<u>Sept. / Oct.</u>	<u>Nov. / Dec.</u>	<u>Jan. / Feb.</u>
U.S. BANK 437 Main St., Spfld 8 pieces	Nancy Cook	Sandi Grubbs	
AFFOLTER, WEST & JONES 1600 Valley River Dr. 8-10 pieces	Brooke Borcharding	Alana Feldman	
KOHO BISTRO 2101 Bailey Hill Rd. 16 pieces	Diane Morrow	Isabel Dutroncy	Sandi Grubbs
SIUSLAW BANK 707 Main St., Spfld 8-10 pieces	Alana Feldman	Charles Roehrick	
OR. RESEARCH INST. 1715 Franklin Blvd. 20-30 pieces	Isabel Dutroncy	Donna Schimmels	
FULL CITY COFFEE 842 Pearl St. 5-6 pieces	Sept. - not available Oct. - *Available*	Nov. - Anita Browning Dec. - Margaret Plumb	Jan. - Marge Tull Feb. - available

I have a cancellation for Full City Coffee Roasters for the month of October, it can be yours but you need to call fast. The rest of the year is full but as you can see there are plenty of venues open for 2010.

Also... between working on the **EEAA Board of Directors/Juried Show/my own shows/part time job/home-family /and painting** I am looking for a replacement to take over **"SHOWS ON VIEW"** If you have an interest in working with area business and galleries, please contact Sue at 726-8595. It is a great way to put yourself out there!

Thanks, Isabel

Writing for business, the arts and social services



Todd Peterson

Call Todd at 741-2067 for your next writing project.

www.oregonwriterandeditor.com

Marketing Communications
Websites & Blogs Grant Proposals
eNewsletters & Magazines
Business Plans & White Papers
Feature Articles & News Stories



Art Reproduction

Janet Smith (541) 746-1100
Toll Free # 1-800-746-1102

Certified Organic Coffee



Founded in 1984 by
Alberto Miranda

The *Cafeto Custom Roasting Coffee* is now the most respected and established coffee roasting company in Lane County. As a courtesy, all coffee is given to us free by Mr. Miranda. (Centrally located in the Eugene/Springfield metro area by Exit 191 on I-5.)



The Emerald Art Center presents
"Needlework by Cascade Stitchers" (and more)

Shown September 1 through September 25, 2009

Gallery hours are Tuesday through Saturday from 11 AM—4 PM.

A reception for the public and the artists will be on SECOND Friday, September 11th from 5:30-7:30pm.

Needlework by Cascade Stitchers



Barb Mitchell, "Counted Cross Stitch Cat"

A chapter of The Embroiderers' Guild of America (EGA), will feature a variety of embroidery types, including needlepoint, counted cross stitch, crewel, appliqué and beadwork. Many of the pieces have taken hundreds of hours to complete using complex designs and dozens of different types of stitches and needlework techniques. These amazing and beautiful pieces of textile art utilize a variety of fibers, such as dyed threads, silks, metals, cotton and wool, and are stitched on fabrics such as congress cloth, aida cloth and various linens. Also featured at the show will be an EGA traveling exhibit entitled, **"The Lincourt Hearts,"** so-named for Marnie Lincourt of Little Rock, Arkansas, who created the heart design and solicited 40 expert needleworkers from across the country to stitch them utilizing their own unique techniques. Lincourt's intent was to generate an exhibit that would showcase the varied embroidery methods that can stem from a single design. Originally on display at EGA's 2000 Region Seminar in Shreveport, Louisiana, The Lincourt Hearts have traveled extensively throughout Arkansas, Louisiana, Oklahoma and Texas, and were recently exhibited at an arts festival attended by over 100,000 people. **Cascade Stitchers** and the parent EGA are non-profit educational organizations offering study and preservation of the heritage and art of embroidery. For more information about Cascade Stitchers or EGA, contact Ann Simas, Community Relations Liaison, at CascadeEGA@gmail.com.

Also showing: "The Art of Architecture" by Emerald Art Center member **George "Rusty" Mayer**. An architect from 1939-2007, all of the drawings were done with a T-square, triangle, French curves and compasses, all completed by precise steady hands. No longer does it take such precise and complex movement of the eyes and hands. While the automobile outmoded the wagon wheel, the use of computers has lost the individual skills of drawing by hand. This show will illustrate high school engineering drawings through the University of Oregon days, as well as, the working drawings and renderings of a professional architect. Rusty says he may not be a match for Frank Lloyd Wright or Skidmore, Owens and Merrill but will show you an art that is about to be lost, the "Art of Architecture".



Consuela Perez and Michael Jefferis Family

Also showing: "Shared Communities, Mixed Identities" reflects the multiracial experiences of a significant and often overlooked part of our community. The people in these photos are diverse in race, ethnicity, age, gender, sexual orientation, gender identity, profession, religion, and education. These portraits and biographies are part of an effort to counter stereotyping by reflecting many different identities and experiences in Lane County. We hope it will encourage acceptance and validation of our diverse families, friends, neighbors, co-workers, and classmates, and contribute to building a community where everyone feels safe, valued, and respected. Created by Community Alliance of Lane County, Shared Communities, Mixed Identities is part of a series, including "We Are Neighbors" and "What Does Family Look Like?", recognizing immigrant neighbors and family diversity. For more information or to book any of these exhibits, call CALC at 541-485-1755 or visit www.calclane.org.

Featured Members:



Bernie Herr, "Come Back #2"

Bernie Herr's "Outside the Lines!!" will be a display of recent work by **Bernie Herr**, an Emerald Art Center member and a very prolific watermedia artist. **Bernie** is known for his experimental techniques, always seeking new horizons. He paints the whole spectrum of subject matter from semi realism to abstract representation. He loves color. He will be welcoming the public at the EAC reception on Friday, Sept. 11, and enjoys discussing his art!



Charles Roehrich, "Sweet Creek 2"

Charles Roehrich's paintings are from nature. He just returned to painting in the last two years. He graduated from Oregon State many years ago and took watercolors from Nelson Sandgren back when he was teaching there. He took off most of thirty years working and raising a family, but now is retired and has the time for painting. He enjoys just doing it and sharing his work with others.

Plus work from members of the **Emerald Art Center**.

Members' Page

**Welcome New
Participating Members:**
Jovonnie Bashaw
Dani Zack

News and Member Show Reminders

Remember that you need to pick up your current work on Saturday, September 26. It's a big help to have everything out of the way for those working on the Springfield Mayor's Art Show for October.

Do you remember the "Miniatures For Everyone" show we did for last November/December Members' Show? I think we all had fun with it, so we're going to do it again this year. The intake date for the show will be Saturday, October 31. The specifications for the pieces of art are **12 inches square, including frame if applicable**. Also, you will be allowed to display two pieces, since we're dealing with the small size. If you choose to do something other than a miniature, then it needs to be just the normal one piece per member. So, start working on something small! It will be exciting to see what everyone comes up with. We'll have a reminder in the October newsletter.

Don & Ginny Burgess, Exhibit Directors

Help Wanted:

Contact Cheryl Leontina or Sue Banta 726-8595 with your interest in any of the positions listed below.

Volunteer Committee Position:

- ◆ Adult Class Committee Director
- ◆ Satellite Class Coordinator
- ◆ TEACH Arts Graphics Designer
- ◆ Gallery Cleaning
- ◆ Data Entry using Excel & QuickBooks

Get well wishes

We are so glad to hear that Wally Reade is on the mend after his heart surgery. Please send Wally your good energy and best wishes for a speedy recovery.

Member Wall Exhibit

	<u>East Wall</u>	<u>South Wall</u>
Sept.	Bernie Herr	Charles Roehrich
Oct.	- Mayor's Art Show -	
Nov.	Fran Pecor	Janet Biles
Dec.	Don Burgess	Leigh Avery



"EAC ME!"

Emerald Art Center Materials Exchange

Sue's Wish List: Small paper clips, 3 hole punch, Bulletin boards, String, Heavy tape. **Big Wishes:** Business card stock 8871 **Little Wishes:** staplers, plastic cups for punch file folders, and white out. **Things we always need ...** card-stock paper, copy paper (8 1/2x11 & 11x17), envelopes, small paper plates, and paper coffee cups, toilet paper, Kleenex, Comet, and paper towels

TEACH Arts Wish List:

- Soft watercolor paint brushes (all sizes)
- Watercolor paint
- Tempera paint
- Liquid acrylic paint
- Tissue paper
- Charcoal

Get Ready for the M.A.S.

Artists entering MAS: Be sure your work is framed and wired according to the show requirements and does NOT exceed size limitations. See your entry form for details... (available at EAC)

Sara Lawrence
541-520-7884

Experience Works Staff

We have been quite fortunate in having some wonderful people from Experience works helping us. We lost Chieko Tomasulo in June. This month we have lost Steven Higgins. Yea! We want to let you know you will be missed and good luck to all of you.

Who's New from Experience Works



Hello,
My name is Lee Harrison, and I have 2 grown children, both living out of state. I also have three 4-footed "kids" still living at home.

Reading is my main hobby, but I also enjoy crafting when I can come up with a creative idea. I've done beadwork, mask painting, and I recently started carving alabaster.

I enjoy working at EAC and meeting its creative and talented members and staff. I'm hoping that some of that will rub off on me.

Congratulations

We would like to congratulate Alana Feldman for winning the Judges Choice Award in the Adult Art Department of the Lane County Fair. Her artwork, "Having Tea with Mona and Me" was the winning piece.

Member Meeting Recap:

Our August Strawberry shortcake party was a huge success and lots of fun! We had great class teasers presented by Alan Clark, David Ewart, Craig Spilman, and John Watson.

What's Next?... :

September 15 "Fall Follies Talent Night" at Wildish Theater 6-8 pm

- 1) 12 five-minute talent spots--1 1/2 hours for musical instruments, songs, dance, poetry, comedy, story-telling, skits, etc. Members sign up first come first served basis ...
- 2) Special treats served at Emerald Art after the performances

October 20 Mozart "Big Wig" Costume Ball 6-8 pm

- 1) Costumes Encouraged
- 2) Music donated by Mozart Players woodwind ensemble
- 3) Mozart Era Dance Instructions
- 4) Finger Food from the era
- 5) Costumes Prizes

Friday Farmers' Market Artist Residency

Come join the fun and paint at Friday Market. We still have openings for September 11 and 18, and October 2.

There will be an "end-of-season" artist show at the **Springfield City Hall Gallery**

Time Capsule

Please stop by and fill out your poem, drawing, or thoughts for our time capsule.

Woodard Gallery Members' Shows 2009 Schedule

- Sep. 26 – PICKUP ONLY (because of MAS) [end of Aug/Sep show and start of MAS]
- Oct. 31 – INTAKE ONLY (because of MAS) [end of MAS and start of Nov/Dec show]
- Jan. 2 – PICKUP AND INTAKE [end of Nov/Dec show and start of Jan/Feb show]

Workshops

September Workshop News

The Emerald Art Center strives to be of service to each and every member. This can be seen frequently as every effort is made by the Workshop Committee to bring favorite instructors back and to recruit new and exciting ones to our area. Whether you are looking to explore watercolor, collage, oil, or the obscure art of the Orient, you can be assured that a workshop will be presented to add to your expertise.

Let the "Chi" be with You!

Last month, local Chinese brush painters enjoyed a delightful week with noted California artist **Nan Rae**. She brought new energy to the EAC and her engaging personality kept everyone in high spirits as they explored new techniques and "exploded restrictive myths." One student remarked, "Not only was the class well presented, it was truly fun to be there each day. Another rejoiced in "Nan's joy, her expertise and her light heart"! All were grateful to the Emerald Art Center for working to bring Nan to Springfield.

Also in August, Jerry Dame's loyal followers filled the center with enthusiasm once again. We are always appreciative that Jerry continues to lend his extensive talent and dynamic teaching style to our members. Jerry's eye for beauty in simple landscapes and his deft hand at using oils to express his vision have won him admiring fans throughout the Northwest. If you were unable to squeeze into this workshop, perhaps you'll get lucky next time as we hope to persuade Jerry to once again grace our lineup of outstanding artists.

Watercolorists....Rejoice!

The fall workshop lineup is brimming over with fab favorites! We have a veritable cornucopia of special workshops from which to choose. Look for samples of their artwork on the Instructors' information board near the gallery reception desk. Each artist sends us a painting so that you may closely study their technique.

Gerald Brommer, "Watercolor & Collage", All Skill Levels, Sept. 14-18



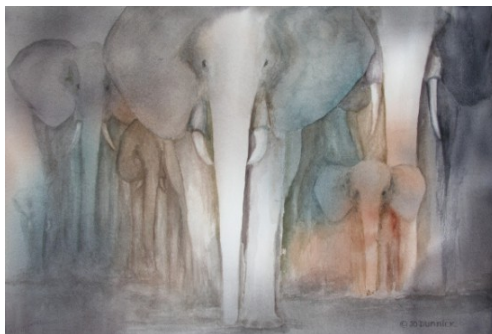
This workshop promises to spill over with new and interesting techniques that will release your personal expression! Gerry will focus on combining watercolor and collage to develop textural surfaces for subject matter. He'll also teach you creative ways to use collage when repairing older paintings. Regardless of your skill level, you'll enjoy learning from this master artist, publisher, teacher and juror. Even as a part-time student, you can learn so much in just a couple of days!

Pat San Soucie, "Stirring the Watercolor Pot", All Skill Levels, Sept. 21 - 25

Roll up your sleeves and have a ball with Pat! She uses very imaginative techniques that include positioning tissue, lace, or torn rice paper as stencils or filters on her painting surface before pouring diluted watercolor or gouache on top of and through the filters. The resulting patterns that emerge inspire her to use colored pencil, inks, graphite, fabric dyes, or Aquarelle crayons to further develop the painting. She has had a fondness for quilt patterns throughout her life and her paintings reflect the patterns found in fabrics with repetitive patterns.



Jo Dunnick, "Play with Watercolor", All Skill Levels, Oct. 19-21



Our own Jo Dunnick has agreed to expand her classroom teaching to the workshop level. Let Jo be your guide through a three day adventure in watercolor exploration. She'll show you how to gain the courage to apply paint and trust in the mingling of colors that lead to spontaneous, fresh and surprising results. Her paintings are often playful with a sense of humor. Jo will help you learn how to develop your style without interfering in your process.

Also coming this fall are:

Larry Johnson "Tips, Tools & Techniques of Watercolor and/or Acrylic"

Larry will be with us for two separate workshops in November. He will present a 5-day watercolor workshop Nov. 2-6 followed by a 4-day Acrylic Workshop Nov. 9-12. As one of the nation's top wildlife artists, he will focus on landscape elements.

Judy Morris "Still Life with Glass and Silver" Nov. 17 - 20

This popular, nationally acclaimed artist will be back for a 4-day workshop focusing on reflective and transparent surfaces. This enlightening workshop should fill up fast and would be worth signing up well in advance.

Important Reminders!

Each time you attend a workshop, your name is entered into a raffle for a free workshop. The winner will be drawn at the end of the year and may choose from any of the 2010 workshops. Good luck! If you are unable to attend an entire workshop or would like to acquaint yourself with an instructor before committing to an entire workshop, you may sign up as a part-time student. The first day is required but then you may sign up and pay for as many or as few days as you wish.

Submitted by Katherine Thompson

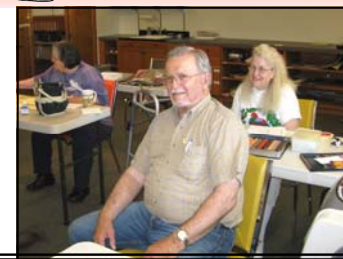
\$ 8,000 Tax Credit for First-Time Homebuyers
Call for details:
Guy Weese 341-7924
"Real Service for Your Real Estate Needs"
Equity Realty GMAC Real Estate
1710 Oak Street, Eugene, OR 97401 (541) 342-4200 www.equityrealty.com

Adult Classes

Friday Open Studio
with friends every Friday
11:00 am—4:00 pm
Free!



BRUCE MITCHELL "Drop-in Clinic"
 Wednesdays [September 2– October 28](#)
 PAINTING FOCUS - 1:00 pm - 3:30 pm
 DRAWING FOCUS - 3:30 pm - 6:00 pm
 \$3 /session EAC Members \$4 Non-Members
 Drop in Students Permitted.
 (Membership is open to anyone)



JOHN WATSON "Pop-Ups! Paper Construction for Cards and Books" [Sunday, September 13](#)
 10 am till 4 pm Members \$27.50, Non-Members \$30.00 Plus \$10 materials fee. Join Emerald Art Center's Above Average Artist John Watson as he introduces, explains and demonstrates the principles of Pop-Up construction. Then we'll make some basic pop-ups with techniques you can use to create greeting cards, books, or anything you can imagine!



John Holdway "Expressive Oil Painting" Tuesdays, [September 8– October 6, 2009](#) 1:00 to 4:00 pm
 Members \$82.50 - Non-Members \$90 (15 hours) Many fear taking up oil painting because of its high status in the art world, but oil is the most versatile and forgiving painting medium and therefore very satisfying. Each week, instructor John Holdway will present simple exercises designed to stimulate creativity and advance technique. Students will develop color sensitivity and mixing, drawing skills, and confidence. Join us in this fun and creative environment.



CRAIG SPILMAN "Plein Air Drawing & Watercolor"

Saturdays – [September 5– 26, 2009](#) 10:00 a.m. to 2:30 p.m. (16 hrs) Note: Orientation for the class on Friday, [September 4](#) from 7-8:00 Members \$88.00; Non-Members \$96.00

The class is open to all levels of experience -- instruction will be adapted to individual abilities and needs. Emphasis in all classes will be on light and dark (value) relationships and composition; with a secondary focus on site selection and eliminating the unnecessary (simplification).



David Ewart "Beginning Portraits" [September 17 through October 8, 2009](#) Thursdays 10 am till 4 pm
 Members \$140.00, Non-Members \$160.00 Using simple, step-by-step instructions, this class begins drawing individual parts of the face and you will progress to drawing your very first portrait. No experience necessary for this exciting new class. David Ewart comes to EAC with over 50 years of experience, and his students have gone on to become nationally known artists.



Merrilea Jones "Card Making Class: Learn to Make Unique Hand-Made Cards"

[Friday, September 18, 2009](#) - 9:00 am to 11:00 am – 2 hours \$11.50 Members; \$13.00 Non Members +\$3 Materials fee -- Or --

[Saturday, October 10, 2009](#) - 1:00 pm to 3:00 pm – 2 hours \$11.50 Members; \$13.00 Non Members +\$3 Materials fee
Card Making Class offered on two different dates for your convenience–

Merrilea will teach techniques in stamping, embossing, paper tearing, chalking, punches, dye cuts and many more in her interactive paper crafting class. A new trio of cards will be offered each month with tips and ideas that all can enjoy.



Bess Nobel - Painting a Watercolor Floral Inspired by Georgia O'Keeffe

Thursdays, [October 1– 29, 2009](#) from 12:30 to 3:30 p.m.

Advanced Beginner to Intermediate Watercolor class Members - \$82.50, Non-Members \$90

Bess will help students choose an image from Georgia O'Keeffe's book, One Hundred Flowers. This oil image will provide the basis for understanding watercolor washes, values, color choices, composition, abstraction, expressionism, cropping, and enlargement. The class will feature demonstrations, talks, discussions, painting time with individual attention, and the enjoyment of the company of other artists.



Alan M. Clark "Controlled Accidents, Exercises in Spontaneous Image Generation"

Acrylic Painting class for adults and young adults (12 and older) [October 5–November 2, 2009](#)

Monday Evenings 6:30 PM to 9:30 PM Members \$82.50, Non-Members \$90.00 Plus \$2 materials cost

During each class, Clark will demonstrate painting techniques that produce fascinating and complex variations of shape and value on a painting surface. Much like finding faces in wood grain, rock or clouds, these variations can present to the imagination fantastic suggestions of form. By adding highlights, shadows and color, one can develop these painting surfaces into finished compositions.



TEACH Arts Classes *sign up today!*

Using Art to Create Art with Kim Jarvis Ages 6 – 12 Tuesdays 3:45-5:15 Kids will create their own masterpieces as they learn about the signature art techniques of major artists and art movements, studying artists of the 18th through the 20th centuries.

Adventures in Art Materials with Heidi Cleveland Ages 6 – 12 Wednesdays 3:45- 5:15 Learn about the myriad of art media and techniques available. Create your own unique artwork using textural relief, mosaics, mixed media, and recycled materials.

Art Foundations I with Jessica Graff Saturdays 12:30-2:00 pm Ages 8-12 The Color Wheel Primary & Secondary Colors and How to Mix them, Geometric Shapes using Colored Tissue Paper, Abstract Shapes focusing on Organic Forms, Grey Scale and Negative Space with Charcoal



Presents
TEACH Arts



**Art Classes
for Kids!**

Free Family Art Sundays

Join us from 2-4 pm on five 2nd Sundays through the school year, when Emerald Art Center will host free art activities for children and their families. There will be special cultural themes, music, dance, and a variety of "hands-on projects" each time.

Come visit us!

October 11, 2009

Urban Art & Culture

November 8, 2008

Egyptian Art & Culture

January 10, 2010

India's Art & Culture

February 14, 2009

Folk Art & Culture

March 14, 2009

South American Art & Culture

...or just ***Drop in*** for...

Drop In Family Art Studios **Every 4th Saturday**

10:00-12:00 **All Ages Welcome**
Starts 4th Saturday, Oct 2009 and continues each 4th Sat. through May 2010. Drop in and enjoy guided art projects, including: printmaking, collage, masks, clay, puppets, watercolor, mosaics, & basketry.

\$5 per student per day

Family Art Sundays **Five 2nd Sundays**

OCT / NOV / JAN / FEB / MAR
from 2-4 pm Emerald Art Center hosts **free** art activities for children and their families.

There will be special cultural themes and a variety of "hands-on"

projects each time.

— FREE —

Fall Term 9/21/2009 – 10/31/2009

Generous Support Given by

Chambers Family Foundation

James F. and Marion L. Miller Foundation

& Springfield Arts Commission



Welcome **Annetta Becker!**

Annetta came to EAC through Experience Works and has done an amazing job leading our **TEACH Arts** Program, from rallying support from Volunteers to brainstorming new exciting activities that respond to the needs in our community. EEAA Board of Directors has voted and agreed on contracting to hire Annetta to continue leading our TEACH Arts program through the end of this year. We hope to hear from one or more Granting Foundations to secure more long-term funding for her position.



Headquarters & Office
500 Main Street,
Springfield OR 97477
(541) 726 8595

Nonprofit
US Postage Paid
Eugene, OR
Permit No. 859

The Artists' Corner

Above and Beyond:

Bess Nobel took over as chair of the Workshop Committee two years ago. As the saying goes “We’ve come a long way baby,” thanks to Bess.

With Bess’s good leadership qualities she built a team of people that made the workshop committee dedicated, fun loving, and down to earth. She assigned jobs to each person and got the desired results. Bess is a loving giving person and she put her heart and soul into this committee.

Just a few of Bess’ many accomplishments are:

- ◆ Increasing the number of committee members from 6 to 13.
- ◆ Better organization; Bess was willing to tackle problems and help.
- ◆ Nearly doubling total annual income.
- ◆ Using an Excel chart to track income and expense to see where the money is.
- ◆ Decreasing workshop cancellations thanks to the new “part-time student” policy.
- ◆ Increasing facilitators from 1 to 2 for each workshop allows for a smoother running workshop and personal touch.
- ◆ Implementing a survey to find out what the membership wanted in workshops as to price, recruiting, and so our publicity & our service would be better, for both students and instructors.
- ◆ Defining clear guidelines, a mission statement, and members’ responsibilities.

Bess will stay on the committee and be the trainer of the new committee members, figure the budget, write the contracts, and hang the faculty gallery wall, Bess thanks so much for being the wonderful giving person that you are!!!

Carol Plaia has her hand in a lot- she serves on the Board, helps with Family Art Sunday, makes signs, helps set up member’s wall, and will help out anyone! She is now on the Juried Show Committee. Carol we thank you for your energy and willingness to help us out in SO MANY WAYS We LOVE you!!!!

Thank You Members:

Andy Anderson for napkins, hanging folders, and copy paper

Janet Bailey for water bottles, beads, crayons, cards, letters, and paper clips

Maureen Daughtery for zucchini bread

Bonnie Gray for lovely flowers

Lee Harrison for cookies and 3- hole punch,

Vicky Kauffman for small sweeper, cookies, small easel, stretcher, frames, oil paint, and back up stereo

Carol Lane for box of plastic cups and lids for Teach Arts

Chris Mackay for not only volunteering to fix the stereo, but taking it all apart.

Carol Plaia for cookies

Shirley Reade donated canvas and we sold out! Thanks so much.

Daryl Ryder for assorted white out

Thank You Arts Advocates in the Community:

Ruth Bass (not a member) noticed that our mat cutter needed some supplies and called them and ordered the supplies. Thanks so much.

Lee Mendell for art supplies for **TEACH Arts**

Thank YOU!!!

Please put your name on what you donate so I will know <i>who gave what</i> .

Chamber Music Amici

the first resident company of the
Richard E. Wildish
Community Theatre
in cooperation with



Emerald Art Center

is sponsoring an art contest
to select art to be used on posters

GOAL:

To select 5 paintings, drawings or designs *'that capture the beauty and excitement of chamber music'* to be used for publicity purposes for the 2010-2011 season.

ELIGIBILITY:

Open to all artists, 18 years and older, residing in the area.

REQUIREMENTS:

- No entry fee
- One entry per artist
- Vertical format
- Original art only, any media, any style
(No photography)
- Entries must be submitted on CD, with entry form and SASE

Finalists:

- Entry must have ID label attached on the back
- Entry must be framed and ready for hanging (no saw tooth hangers).

Contest Information:

The winning entries will be used for publicity purposes only for the 2010-2011 season and artists will retain ownership of their art work.

- Five awards of \$100 each and one People's Choice Award
- Submission deadline: January 15, 2010
- Notification to finalists by: January 22, 2010
- Original art delivered to EAC: January 26, 2010 - 11:00 to 4:00 pm
- February 1 – 27, 2010: Ten finalists will be on display at EAC
- February 22, 2010: 5:30 to 7:00 pm Reception and announcement of People's Choice Award Winner at the Emerald Art Center, where the 10 finalists will be on display
- February 22, 2010: 7:30 pm: Announcement of the 5 winners at the Wildish Theatre, just before the concert

FYI: The instruments that make up the Chamber Music Amici include an oboe, a piano, a cello and two violins.

For more information about the group go to: <http://www.chambermusicamici.org> Information and entry forms can be down loaded at www.emeraldartcenter.org, or www.chambermusicamici.org, or pick them up at the Emerald Art Center, 500 Main St., Springfield, OR.

**Richard E. Wildish Community Theater
Chamber Music Amici
poster contest entry form.**

Artist Name (print): _____

Address: _____

Telephone: _____

E-Mail Address: _____

Art Entry info:

Name: _____

Size: _____ X _____

By signing this entry form the artist agrees to give the Richard E. Wildish Theater Chamber Music Amici permission to use their original art work for publicity purposes for the 2010-2011 season only.

Signed: _____ Date: _____

Mail CD, entry form and SASE to:

Loi Heldt
5302 Tahsili St.
Eugene, OR 97405





September 2009



Sun	Mon	Tue	Wed	Thu	Fri	Sat
30	31	1 GPR-Class-Cancelled 12:00-4:00 PM	2	3	4 11-4 Open Studio Dave Ewart Portrait Demo 1-3 PM	5 Craig Spilman Drawing & Watercolor 10:00 AM - 2:30 PM
6	7	8 John Holdway Oil Painting 1:00 - 4:00 PM	9 Bruce Mitchell "Drop In Clinic" 1 - 3:30 PM Painting 3:30 - 6 PM Drawing	10	11 11-4 Open Studio 5:30-7:30 PM Second Friday Reception	12 Craig Spilman Drawing & Watercolor 10:00 AM - 2:30 PM
13 John Watson "Bookbinding: Pop up Pages" 10:00 AM - 4:00 PM	14	15 Emerald Fall Follies @Wildfish 6:00 PM John Holdway Oil Painting 1:00 - 4:00 PM	16 Bruce Mitchell "Drop In Clinic" 1 - 3:30 PM Painting 3:30 - 6 PM Drawing	17 Dave Ewart Portrait Painting 10:00 AM - 4:00 PM	18 11-4 Open Studio Merrilea Jones Card Making 9:00- 11:00 AM	19 Craig Spilman Drawing & Watercolor 10:00 AM - 2:30 PM
Gerald Brommer Workshop September 14 - 18 from 9 am -- 4 pm						
20	21	22 TEACH ARTS CLASS 3:45-5:15 PM Board Meeting 8:30 AM John Holdway Oil Painting 1:00 - 4:00 PM	23 TEACH ARTS CLASS 3:45-5:15 PM Bruce Mitchell "Drop In Clinic" 1 - 3:30 PM Painting 3:30 - 6 PM Drawing	24 Dave Ewart Portrait Painting 10:00 AM - 4:00 PM	25 11-4 Open Studio	26 Art Pick up M.A.S. Intake Youth Drop In Class 10:00 -12:00 + TEACH ARTS FOUNDATIONS 12:30-2:00 PM Craig Spilman Drawing & Watercolor 10:00 AM - 2:30 PM
Pat San Soucie Workshop September 21 - 25 from 9 am -- 4 pm						
27	28 Set up MAS GALLERY CLOSED	29 Set up MAS GALLERY CLOSED TEACH ARTS CLASS 3:45-5:15 PM John Holdway Oil Painting 1:00 - 4:00 PM	30 Set up MAS GALLERY CLOSED TEACH ARTS CLASS 3:45-5:15 PM Bruce Mitchell "Drop In Clinic" 1 - 3:30 PM Painting 3:30 - 6 PM Drawing	1	2	3



October 2009

Sun	Mon	Tue	Wed	Thu	Fri	Sat
28	Set up MAS 29 GALLERY CLOSED	Set up MAS 30 GALLERY CLOSED	Set up MAS 31 GALLERY CLOSED	Set up MAS 1 GALLERY CLOSED Dave Ewart Portrait 10 AM-4 PM Bess Nobel O'Keefe Flowers 12:30-3:30 PM	Set up MAS 2 GALLERY CLOSED MAS Artist Reception 5:30-7:30 PM	Mayor's Art Show 3 TEACH ARTS FOUNDATIONS 12:30-2:00 PM
4	5 Alan Clark Controlled Accidents 6:30-9:30 PM	Mayor's Art Show 6 TEACH ARTS CLASS 3:45-5:15 PM John Holdway Oil Painting 1:00 - 4:00 PM	Mayor's Art Show 7 TEACH ARTS CLASS 3:45-5:15 PM Bruce Mitchell "Drop In Clinic" 1 - 3:30 PM Painting 3:30 - 6 PM Drawing	Mayor's Art Show 8 Dave Ewart Portrait 10 AM-4 PM Bess Nobel O'Keefe Flowers 12:30-3:30 PM	Mayor's Art Show 9 11-4 Open Studio	Mayor's Art Show 10 TEACH ARTS FOUNDATIONS 12:30-2:00 PM Merrilea Jones Card Making 1:00- 3:00 PM
11 Family Art Sunday Urban Art & Culture 2-4 pm	12 Alan Clark Controlled Accidents 6:30-9:30 PM	Mayor's Art Show 13 TEACH ARTS CLASS 3:45-5:15 PM	Mayor's Art Show 14 TEACH ARTS CLASS 3:45-5:15 PM Bruce Mitchell "Drop In Clinic" 1 - 3:30 PM Painting 3:30 - 6 PM Drawing	Mayor's Art Show 15 Bess Nobel O'Keefe Flowers 12:30-3:30 PM	Mayor's Art Show 16 11-4 Open Studio	Mayor's Art Show 17 TEACH ARTS FOUNDATIONS 12:30-2:00 PM
18	19 Alan Clark Controlled Accidents 6:30-9:30 PM 20 TEACH ARTS CLASS 3:45-5:15 PM "Big Wig" Costume Party 6:00 PM	Mayor's Art Show 20 TEACH ARTS CLASS 3:45-5:15 PM Bruce Mitchell "Drop In Clinic" 1 - 3:30 PM Painting 3:30 - 6 PM Drawing	Mayor's Art Show 21 TEACH ARTS CLASS 3:45-5:15 PM Bruce Mitchell "Drop In Clinic" 1 - 3:30 PM Painting 3:30 - 6 PM Drawing	Mayor's Art Show 22 Bess Nobel O'Keefe Flowers 12:30-3:30 PM	Mayor's Art Show 23 11-4 Open Studio	Mayor's Art Show 24 Youth Drop In Class 10:00 -12:00 + TEACH ARTS FOUNDATIONS 12:30-2:00 PM
Jo Dunnick Workshop Oct. 19-21 9 am-4 pm						
25	26 Alan Clark Controlled Accidents 6:30-9:30 PM	Mayor's Art Show 27 TEACH ARTS CLASS 3:45-5:15 PM Board Meeting 8:30 AM	Mayor's Art Show 28 TEACH ARTS CLASS 3:45-5:15 PM Bruce Mitchell "Drop In Clinic" 1 - 3:30 PM Painting 3:30 - 6 PM Drawing	Mayor's Art Show 29 Bess Nobel O'Keefe Flowers 12:30-3:30 PM	Mayor's Art Show 30 11-4 Open Studio	M.A.S. Pickup Member Art Intake "Miniatures" TEACH ARTS FOUNDATIONS 12:30-2:00 PM