



# The Artists' Corner

July 2008

500 Main Street, Springfield, Oregon 97477  
(a nonprofit 501(C)3 organization)

## ***Emerald Art Center has a new E-Mail:***

[admin@emeraldartcenter.net](mailto:admin@emeraldartcenter.net) !

This "admin" account will be used for all general email announcements and inquiries.

Please add [admin@emeraldartcenter.net](mailto:admin@emeraldartcenter.net) to your approved server recipient list.

We are fazing-out the old [emeraldart@clearwire.net](mailto:emeraldart@clearwire.net) account.

Thanks for helping us stay connected with you!

### All New Emails at Emerald Art Center

Guy Weese, Webmaster at: [webmaster@emeraldartcenter.net](mailto:webmaster@emeraldartcenter.net)

Linda Kaye, Treasurer at: [treasurer@emeraldartcenter.net](mailto:treasurer@emeraldartcenter.net)

Gladys Bacon-Rust, Exhibition Chair at: [juriedexhibition@emeraldartcenter.net](mailto:juriedexhibition@emeraldartcenter.net)

Fritz Callahan, Newsletter Editor at: [newsletter@emeraldartcenter.net](mailto:newsletter@emeraldartcenter.net)

Cheryl Leontina, Director at: [director@emeraldartcenter.net](mailto:director@emeraldartcenter.net)

Sue Banta, Coordinator [coordinator@emeraldartcenter.net](mailto:coordinator@emeraldartcenter.net)

Making EAC more accessible for YOU!

## Coming soon at the *Emerald Art Center*

### First Place Family Center's "The Power of Love"

*A Family Art Project*



*First Place Family Center's Power of Love Family Art Exhibit* will be on display through August in the Brockett Family Gallery at Emerald Art Center.

First Place Family Center is often the first place families with children come when they become homeless or face other serious family emergencies.

With The Power of Love Family Art Project we created a safe and playful opportunity for parents and children to move beyond their struggle for survival through cooperative artistic expression using watercolor paints.

Local artists worked with families, helping them to identify and enrich the combined artistic talents of homeless adults and children. Working together in this way families were able to focus beyond their immediate difficulties through the power of artistic creation.

Special Thank YOU to Emerald Art Center Artists who donated their time and energy volunteering at First Place Family Center.

Thank you also to David Seligson who spearheaded and collaborated with us on this project and Emily Baran for arranging this show.

First Place Family Center 1995 Amazon Parkway Ct Eugene, OR 97405 (541) 342-7728

- What's New at EAC..... 1
- Shows on View..... 2
- Gallery Exhibits ..... 3
- Members' Page ..... 4
- Workshops ..... 5
- Adult Classes ..... 6
- TEACH Arts ..... 7
- Thank YOU! ..... 8
- M.A.S. Prospectus .....insert
- Calendar .....insert





**Emerald Empire Art Association** is a non-profit organization dedicated to developing and encouraging visual arts in the community.

**Vision:** A community embracing and celebrating the arts, experiencing the joys of creative expression, and sharing artistic creations with one another.

**Mission:** To develop and encourage greater interest in the arts.

**Goals:**

- To provide an environment which supports and develops artists.
- To provide opportunities for artists of all ages to display and market their work.
- To offer a variety of programs and events to teach and display art.
- To enrich the community through outreach and in-house art programs.
- To thrive as an organization with committed volunteers, sustainable funding sources, and sound business practices.
- To provide leadership in collaborative efforts to support organizations located in the Springfield Downtown Cultural District as well as area arts organizations.

*General Membership meetings occur the third Tuesday of each month at 7 pm. Visitors are always welcome.*

**Executive Director:**  
Cheryl Leontina  
director@emeraldartcenter.net

**Gallery Coordinator:**  
Sue Banta  
coordinator@emeraldartcenter.net

**Phone:** 726-8595  
admin@emeraldartcenter.net  
**Website:** www.emeraldartcenter.org

**Officers:**

- President - Joe Leahy
- 1st Vice President - Guy Weese
- 2nd Vice President - Diane Ronning
- Secretary - Position is Open
- Treasurer - Linda Kaye
- Immediate Past Pres. - Steve Hill

# SHOWS ON VIEW

## JULY 2008

### SIUSLAW BANK (8-10 paintings)

707 Main St., Springfield

Point of contact: Operations Supervisor Debbie Sutch, 746-7900

**AVAILABLE**

### US BANK (8 paintings)

437 Main St., Springfield. Deborah Davis, Branch Mgr. 747-6712

Set-up before 10 am or after 4:30 pm

**AVAILABLE**

### AFFOLTER, WEST & JONES (8 to 10 paintings)

Architect Planners, AIA, PC,

1600 Valley River Dr., Ste 270, Eugene. Set up 9 to 5 pm, M-F. Call 342-6511

**Irina Fraidick 687-0456**

### METCO INVESTMENT REALTY, INC. (30 paintings)

326 Main Street, Springfield - Jeff Cole 683-9001 (Hang M-F, 8-5 pm)

**AVAILABLE**

### KOHO BISTRO (16 paintings)

2101 Bailey Hill Road, Eugene **10% commission!**

Kevin Highland, Owner, 681-9335. Call him to hang about 9 am

**AVAILABLE**

### OREGON RESEARCH INSTITUTE (30 plus paintings)

1715 Franklin Blvd., Eugene 484-2123

Point of Contact: Judith Thompson 484-2123, x2145

**AVAILABLE**

**To schedule an exhibition**

call: Fritz Callahan, 349-1305.

Please be advised that you are responsible for your art work.

EEAA or the above establishments are not liable.

**Art Reproduction**

Janet Smith (541) 746-1100  
Toll Free # 1-800-746-1102

### Certified Organic Coffee

**Founded in 1984 by Alberto Miranda**

The *Cafeto Custom Roasting Coffee* is now the most respected and established coffee roasting company in Lane County. As a courtesy, all coffee is given to us free by Mr. Miranda. (Centrally located in the Eugene/Springfield metro area by Exit 191 on I-5.)

# Gallery Exhibits

John and Robin Jaqua Gallery

&

Brockett Family Gallery



“Fodder and Son”  
by Herman Krieger

The **Emerald Art Center** presents “**The Twentieth Annual PhotoZone Juried Show.**” The exhibit is shown from July 1st through August 1st, 2008. The **PhotoZone Juried Show** is a fine art photography exhibit from numerous Western Oregon photographers. The show is sponsored and juried by members of the **PhotoZone Group**.

## Cyd and Casey Woodard Gallery on the Main Floor

**GATHERING:**

a multi-artist exhibit on display at the Emerald Art Center during the month of July

Sylvia Casillas  
JoAnn Chartier  
Carrie Culliton  
Ellen Furstner  
Jessica Graff  
Kim Jarvis  
Linda Kaye  
Cheryl Leontina  
David Marks  
Carol Plaia  
Celeste Rose  
Daryle Ryder  
Marilyn Stauber  
Terry Weiss  
Jerry Williams  
Scott Wylie

“**Gathering**” is the title of a multi-artist exhibit organized by **Cheryl Leontina** and **Carol Plaia**. All of the objects in the exhibit in some way explore the world of things that can be worn. They may actually be wearable, or they may reference things that are worn.

Also at 7pm during the July 11th reception, **Jerry Williams** will give a presentation entitled “**The Mask.**” **Jerry** is a well known artist in many media, and Professor Emeritus in Theatre Arts at the University of Oregon, where he taught classes about masks for thirty years. He is also editor and publisher of *quARTerly* magazine. A discussion period will follow.

### Sara Lawrence is showing “A Brush with Reality”

With the realism of a photograph she applies the techniques and mediums of the Old Masters. Taking the depth of the oil and adding luminosity with the magic the medium provides, she tries to offer the viewer an adventure perhaps never taken before.



“Inside the Falls”  
By Sara Lawrence

Reception for the public and the artists will be on **SECOND Friday**  
July 11th from 5:30-7:30pm.

## Member Wall Exhibit

### East Wall

July “Gathering” (Carol Plaia)  
August Joy Woodard  
September Shirley Froyd  
October Mayor Art Show  
November Richard Weeks  
December Don Burgess

### South Wall

“Gathering” (Cheryl Leontina)  
Joy Woodard  
Guy Weese  
Mayor Art Show  
Gladys Bacon Rust  
Leigh Avery

### Panel Wall

Sara Lawrence  
Sherri McDowell  
—Available—  
Mayor Art Show  
Elva Carter  
Michelle Thorp

# Members' Page

## Mark your calendars for Summer's Member Meetings

July 15th beginning at 7 pm:

Izzy Fletcher will introduce the new "Lyle Hatfield Pop Up Tent Days: Arts and Craft Market" with music and food in the parking lot between Emerald Art Center and the Springfield Museum during Labor Day Weekend, August 30-Sept 1 from 10 am till 5 pm.

August 19th beginning at 6 pm:

EAC's Ice Cream Social ... YUM!

The VHS tapes have been organized for your convenience. There is a catalog on the shelf listing the categories and titles. The magazines dated from 2000 to 2008 have been reorganized. Note: There are many new magazines about pastels.

Ellen Gabehart: Librarian

## OPINION...

### BACONBITS

by *Gladys Bacon-Rust*

This month I would like to give you a few tips for entering art competitions.

**#1. Submit only good quality images.** We had some images entered this year in the Emerald Spring Exhibition that were so bad we could not tell what they were.

**#2. Read and follow directions carefully.** When there are hundreds of entries, some selection committee members will not take the time to fix your entry. Because I want everyone to have the opportunity to be included in the ESE I have filled out entry cards, called artists to get information, even labeled some of the discs so they could be included.

We had to disqualify several excellent pieces of art this year because they were oversized, (the judge never got to see them). We had one that had the maximum size listed on the entry, but when we opened the carton to hang the painting it was 5" over. Since we discovered it after the show was laid out to hang, we hung it, but it was not allowed in the final judging for an award. He could have framed it to fit into the requirements, but he did not read the prospectus carefully.

**#3. What judges look for.** I am usually with the judge while he is choosing the award winners and from comments I have heard and articles I have read here are some things they look for.

- A. Attention to detail (Example: Hands in a figure painting)
- B. Freshness (Don't overwork).
- C. Composition and Design.
- D. Consistency in the work.
- E. That spark, the 'queen', etc

**#4. Choose the Competitions Where Your Work Will Fit.** If you paint avant garde work, a traditional show may not be for you and vice versa. Check out the judge, see if his/her work might give you an inkling if he/she would choose your style, content, etc. (I don't think you can always tell.) Don't try to paint something like the judge paints. *Be true to your self.*

**#5. Visit Galleries, Look at Juried Shows, See What Wins Awards, Look at Good Art Books and Take Workshops From the Professionals.**

*Welcome New Participating Members!*

**Sandy Grubbs  
Hanno Hagen**

## **PICKUP/INTAKE DATES: MEMBERS' SHOWS 2008**

**Jul. 26 - PICKUP AND INTAKE**

[end of Jun/Jul show and start of Aug/Sep show]

**Sep. 27 - PICKUP ONLY**

(because of Mayor's Art Show from 10/4 to 10/31) [end of Aug/Sep show and start of MAS]

**Nov. 1 - INTAKE ONLY**

(because of MAS) [end of MAS and start of Nov/Dec show]

**Dec. 27 - PICKUP AND INTAKE**

(end of Nov/Dec show and start of Jan/Feb show)

**Don and Ginny Burgess  
Exhibit Directors**

I am pleased to invite you to my first art show!

*The Lane County  
Courthouse Entry  
125 E. 8<sup>th</sup> St.  
Eugene, Oregon  
(682-4203)*



*July 1<sup>st</sup> - July 31<sup>st</sup>  
Monday - Friday  
8:00 am - 5:00 pm  
Sue Rosado*

### **For Sale: Etching Press**

12"X26" Phenolic Bed Plate  
One Wool Catcher Blanket  
One Wool Cushion Blanket  
One Wool Pusher Blanket  
Use it on a table or on the stand.

I also have a great book on the etching process.

To buy today: \$1114.00  
Will sell for \$500.

Contact: Gladys Bacon-Rust at  
gbacon3@msn.com



# Workshops



## UPCOMING WORKSHOPS

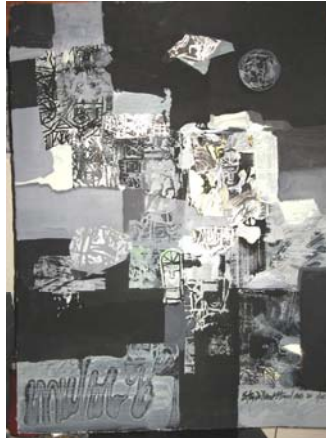
Summer has finally arrived and reminded us of the reason we live and paint in this beautiful state. EAC provides workshops with nationally recognized instructors. Space is still available for the following fabulous workshops.

Betsy Dillard Stroud	July 28-Aug 1
Jerry Dame	August 11-13
Sarkis Antikajian	August 25-29

The **Betsy Dillard Stroud** workshop “Experiment in Aqueous Ecstasy” will run July 28 to August 1. Betsy is a nationally recognized artist, educator and author with five published books and many magazine articles. Her most recent book The Artist’s Muse: Unlock the Door for your Creativity was released in December 2007.

A signature artist and Board Member of the American Watercolor Society, Betsy has juried numerous shows throughout the country and is scheduled to be the **juror for the NW Watercolor Society show in October 2008**. Betsy’s work is in private and corporate collections around the world. Her upcoming workshop will utilize various aqueous media to create paintings that are fresh and exciting. Join her to explore and develop your creativity and design in this fun and inspiring workshop!

**Jerry Dame’s** workshop in oil and acrylic will concentrate on portrait sketches. The workshop runs August 11-13. Jerry is well known for his generous and supportive teaching style. The portrait can be a daunting challenge for any artist and in this three-day workshop, Jerry will explore Form, Value, Color and Texture as he works with students to create portrait sketches that will stand on their own as a work of art or can be used as guide for the artist who wants to produce a more intricate portrait. See more about Jerry on his website [www.jerrydame.com](http://www.jerrydame.com).



“Tender is the Night”  
Betsy Dillard Stroud



Jerry Dame

A plein air workshop taught by **Sarkis Antikajian** will be held August 25-29. This workshop will be in oil. Sarkis is known for his vibrant and exciting colors. One of his greatest joys is landscapes in plein air. He teaches and demonstrates techniques that will make your paintings powerful and dramatic. Join him for this fun and rewarding workshop. See more about Sarkis on his website [www.sarkisantikajian.com](http://www.sarkisantikajian.com).

**These workshops are a way to develop your art, network with other artists and support the Emerald Art Center!** Register now at (541) 726-8595. See our website [www.EmeraldArtCenter.org](http://www.EmeraldArtCenter.org) for more details and downloadable forms.

## EVALUATION OF RECENT WORKSHOPS:

We received positive feedback from our most recent workshops:

Another successful Judy Morris watercolor workshop was held in late May. Here are some of the comments from the end of class evaluations... “wonderful creative ideas and practical ways to do them”... “I learned what I needed and way more; also, the people were so friendly and non-competitive... “expert information”... “she makes the classes fun and entertaining”... “Judy is such a great artist-full of talent and imagination”... “so much info given about design and techniques”.

On another note, I happened in on two of Clinton Conley’s Thursday afternoon classes on watercolor technique and found them delightful. On June 5<sup>th</sup> the subject was sky and clouds and on June 12 he presented how to paint water. If you ever have the chance to sit in on his classes I recommend them, especially for beginners. Clinton has been painting and teaching for many years and his knowledge and enthusiasm are apparent. Perhaps we could get him to teach a longer workshop for intermediate and advanced.

## EAC Permanent Collection

**Frank LaLumia** donated a painting which was completed in plein air on our second day of painting in May at Hendricks Park in Eugene. It will be matted and framed and hung in our gallery as part of the permanent collection. It is valued at \$1800 unframed! And it captures that day perfectly. Frank taught us to paint the moment that is in front of our eyes on the day we are there, not how we wish the day was, i.e. warmer, drier, clearer, crisper. We are very grateful to Frank and his wonderful wife Paula for this donation.

**Robert Burridge**, the juror for our 2008 National Spring Show, donated one of his paintings to the permanent collection. Robert gave a demo in late April that was well attended. He encouraged us to be more playful, colorful and daring in our paintings. He brought his art materials for sale and the art center appreciates his donation of part of the proceeds. His high-energy workshop in January 2009 is filling fast and we encourage early sign-ups.

The Workshop Committee will continue to request donations from our famous instructors so that all members can benefit from viewing this high caliber art.

Workshop information submitted  
by Leigh Avery

# Adult Classes



## *“Play with Paint”*

by **Jo Dunnick**

“Play with Paint” pretty much sums up the workshop! Your experience level as a painter does not matter. What actually matters more is your sense of adventure ... your willingness to let the paint and paper take you on a little journey. You will leave the workshop with lots of “starts” (beginnings of potential paintings/journeys) that you can explore and play with at your leisure.

Saturdays August 2<sup>nd</sup> & 9<sup>th</sup> 2008 9:30 am - 3:30 pm

**\$100** - Emerald Art Center Members

**\$110** - Non-Members

## *“The Next Step”*

by **Jo Dunnick**

The purpose of this gathering is to help you get past that first step... creating “starts” (like we did in “Play With Paint”) and go on to “the next step” of moving closer to a finished painting your way! It will be a joint effort to help you get that pesky “Next Step” under your belt.



Saturday, September 13<sup>th</sup> 2008 9:30 am - 3:30pm

**\$45** - Former Students

**\$55** - New Students



## *“Essential Acrylic Techniques”*

by **Corrine Dietz**

Learn the basics and gain control! Acrylic paint, mediums and gels have evolved into one of the most versatile and durable painting options for artists today. Investigate gesso, grounds and the surfaces we work on. Discover the secrets to cleanly mix color as you explore delicate transparent glazes, watercolor like washes and thick, juicy impasto applications. Expand your personal techniques and solve the mystery of acrylic painting in this intensive 5 hour workshop!

Thursday, August 14<sup>th</sup> 2008 - 10:am - 4:pm  
Or Thursday, August 21<sup>th</sup> 2008 - 10:am - 4:pm

**\$71** - Emerald Art Center Members

**\$76** - Non-Members

## *“Amazing Glazing” - Layering &*

*Blending with Acrylics*

by **Corrine Dietz**

Learn how to develop your painting skills and make color sing in a whole new way! You will explore applying thin, transparent layers of paint to achieve luminous glazes, as well as, combine heavy gels with paint to create thick gel surfaces loaded with color & light. Compare mat and gloss mediums as a way to diminish or enhance color intensity. Since control of color is essential, the nature of organic and inorganic pigments is an integral part of the workshop.



Thursday, Sept. 11<sup>th</sup> 2008, 10:am - 4:pm

**\$71** - Emerald Art Center Members

**\$76** - Non-Members

## ART SMART COMMITTEE UNDER WAY AT EAC

In our continuing effort to keep in step with the many exciting changes taking place at EAC - I have been asked to organize and chair a new committee dedicated to “branding” our organization. In this spirit, we hope to educate ourselves as well as the public about art in general and our Center in particular. This will require work and enthusiasm on our part. Our guides are our “front line” of communication, the “face” of EAC, and therefore are extremely important to this. We want to initiate new ideas and ways to show every person who visits our gallery how much we appreciate their interest.

If you would like to join me in this endeavor, please call me at 515-5309, or send an e-mail to [beja@comcast.net](mailto:beja@comcast.net).

Or, contact Sue Banta 726-8595 at the Center.

*B J Ellen*

*“Hey, are you  
ART SMART?”*



*“I’m not sure...  
What do you mean?”*



## THE HISTORY OF OUR ASSOCIATION.

In an effort to acknowledge our supporters and contributors we want to hear from all members who have contributed ...no matter how large or small. If you have given items, worked on committees, pushed a paint brush to help with renovation, or any thing you have done to help EEA operate and travel to 500 Main St. A point of destination **Emerald Art Center.**

Please **E-Mail Izzy Fletcher at: [izzy\\_fle@epud.net](mailto:izzy_fle@epud.net)**

Thank you.

Historians: Dotty Light & Izzy Fletcher

# TEACH Arts

The **TEACH Arts** Program is going through some exciting growing pains and changes. While trying to build up the core classes for youth that are held at the Emerald Art Center, we are also building partnerships with other agencies who serve children.

This Summer **TEACH Arts** is working with the **Migrant Education Program** to help their students paint a large portable mural that will be displayed at Fiesta Latina in September. We are also planning to have a real "artist's reception" for the young artist at EAC.

The **Migrant Education Program** is a Federal program, run by Lane Education Service District. One hundred and twenty-five students from all over the county are transported to the Summer Camp (this year at Springfield's Page Elementary School) for academic and cultural support. A teacher from Mexico who specializes in history and culture is brought in to help with the program. The theme for the mural is "Strong Latina Women" with a focus on Latina women artists, but the it is up to the students how they want to portray their own vision.



The opportunity to partner with this project was a pleasant surprise and occurred while preparing for Fiesta Latina. There has not been much time to plan, since it was such short notice, but the **Migrant Education Program** is happy to have us, and we are happy to work with them. What could be better?

Well...It could be even better if there were some energetic volunteers from our membership who would like to help out (*remember, your 5 hours of volunteering will count for this*), or if we can get some supplies donated **soon**.

## **Migrant Education Program**

July 8-24  
Page Elementary School  
Hayden Bridge Rd., Springfield  
Mondays and Wednesdays  
8:30 am until around noon

## **Wish List**

- T-shirts to be used as smocks. All sizes.
- Lg, med, small containers for paint and water.
- Acrylic paints, bright house paint, etc.
- Tarps.
- CD's of Latina women's music.
- Anything that benefits kids and murals.

## **Springfield Children's Festival**

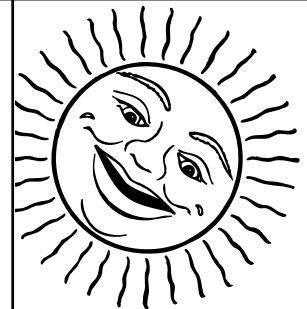
Saturday, July 12, 10 am-3 pm

## **Mary Cole Day/Marcola**

Saturday, July 26, 11 am-5 pm

## **YOUR HELP IS NEEDED AT THESE EVENTS:**

- \*Work a 1 or 2 hour shift, doing art activities with children and families
- \*Help with set-up and clean-up (earlier and later than the above times)



## **OLYMPIC ART AT THE TRACK AND FIELD TRIALS**



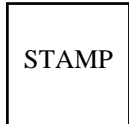
The students of Kim Jarvis are proud to participate in the Eugene 08 Festival by displaying their Olympic art paintings. These paintings were inspired by renowned artist Cristobal Gabarron, who produced official Olympic art using vivid colors and stylized figures which the students utilized with great success. The art will be on display July 1-3.

**PLEASE HELP PLAN AN EXCITING FUTURE FOR TEACH ART!**

**Meeting: Tuesday, July 15, 2 pm**

## **CONTACT:**

**Ellen Furstner 933-2246  
ellenf@hotmail.com**



**Headquarters & Office**  
**500 Main Street,**  
**Springfield OR 97477**  
**(541) 726 8595**  
**www.Emeraldartcenter.org**

*The Artists' Corner*

**Above and Beyond:**

**Andy Anderson** our roving Photographer for our outreach events. Thank you for the pictures of the NextStep Recycling Robotics Exhibit including our new Robot mascot: Emmy at Emerald Art Center.

**Thank You Members:**

**Andy Anderson** for cookies  
**Bev Partridge** donated book *“Drawing on the Right Side of the Brain”* for our library.  
**Ray Shepherd** for new, classy “open” and “closed” sign.  
**Kosjenka (Koka) Filipovic** for the wonderful fabric samples and wall paper sample books for TEACH Arts projects. *The kids will love these!*

**Wish List**

**Big Wishes:**  
 Letter size hanging folders  
**Little Wishes:** Wet floor sign, small calculator for the gift shop, AAA batteries for clocks, staplers, sharp kitchen knives, plastic punch cups, and large glass bowls for popcorn and fruit, glue sticks, white out, and a knife sharpener.

***Thank You Arts Advocates!***

Thank you **John Tamulonis** of the **City of Springfield** and the Room Tax Review Board for Granting Funding to the Emerald Empire Art Association totaling for \$5,000.

This funding will be used to strengthen and refine our marketing effort for our National Spring Exhibition and for our Monthly Workshops taught by nationally known artists.

The goal is to fill our events and workshops to capacity and bring visitors who will travel to Springfield, making Springfield a destination point for artists and art enthusiasts across the states.

\*\*\*\*\*

Thank You **April Seay** of **NextStep Computer Recycling** for Donating our new artist mascot: “Emmy Artist Robot.”



Thank you **Lane County Cultural Coalition** for Granting our TEACH Arts Children Outreach Program with \$2,225.

Your assistance helps us with purchasing art supplies needed for Outreach Collaborative Activities at area Family Resource Centers, our in-house Saturday Youth Art Studios, Five Summer Festivals scheduled- Willamalane Children’s Festival: Art Activity Themed “Art of the Olympics,” 2) Fiesta Latina: Art Activity Themed “Frida Khalo,” and the 3) Martin Luther King Celebration in Springfield: Art Contest Themed “Human Dignity/or/ Respect” 4) the Mary Cole Celebration in Marcola: Art Activity Themed “Art of the Olympics,” and 5) the 08 Festival of the US Olympic Track and Field Trials in Eugene: Art Activity Themed “Art of the Olympics.” These funds will also help supplement Salaries for instructors for *First Saturday Youth Art Studio* and *Outreach at the Family Resource Centers*.

*Thank You for having faith in our children’s outreach programs!*